

HIGHLIGHTS OF PRESCRIBING INFORMATION

These highlights do not include all the information needed to use MYHIBBIN safely and effectively. See full prescribing information for MYHIBBIN.

MYHIBBIN™ (mycophenolate mofetil oral suspension)
Initial U.S. Approval: 1995

WARNING: EMBRYOFETAL TOXICITY, MALIGNANCIES and SERIOUS INFECTIONS
See full prescribing information for complete boxed warning

- Use during pregnancy is associated with increased risks of first trimester pregnancy loss and congenital malformations. Avoid if safer treatment options are available. Females of reproductive potential must be counseled regarding pregnancy prevention and planning [see *Warnings and Precautions (5.1)*].
- Increased risk of development of lymphoma and other malignancies, particularly of the skin [see *Warnings and Precautions (5.2)*].
- Increased susceptibility to infections, including opportunistic infections and severe infections with fatal outcomes [see *Warnings and Precautions (5.3)*].

INDICATIONS AND USAGE
MYHIBBIN is an antimetabolite immunosuppressant indicated for the prophylaxis of organ rejection in adult and pediatric recipients 3 months of age and older of allogeneic kidney, heart or liver transplants, in combination with other immunosuppressants. (1)

DOSAGE AND ADMINISTRATION

ADULTS	DOSAGE
Kidney Transplant	1 g orally twice daily (2.2)
Heart Transplant	1.5 g orally twice daily (2.3)
Liver Transplant	1.5 g orally twice daily (2.4)
PEDIATRICS	
Kidney Transplant	600 mg/m ² orally twice daily, up to maximum of 2 g daily (2.2)
Heart Transplant	600 mg/m ² orally twice daily (starting dose) up to a maximum of 900 mg/m ² twice daily (maximum daily dose of 3 g or 15 mL of oral suspension) (2.3)
Liver Transplant	600 mg/m ² orally twice daily (starting dose) up to a maximum of 900 mg/m ² twice daily (maximum daily dose of 3 g or 15 mL of oral suspension) (2.4)

- Reduce or interrupt dosing in the event of neutropenia. (2.5)
- See full prescribing information (FPI) for: dosage modifications for renal impairment and neutropenia (2.5)

DOSAGE FORMS AND STRENGTHS

- Oral Suspension: 200 mg/mL mycophenolate mofetil.

- CONTRAINDICATIONS**
- Hypersensitivity to mycophenolate mofetil, mycophenolic acid, polysorbate 80 or any component of the drug product (4)

- WARNINGS AND PRECAUTIONS**
- Blood Dyscrasias (Neutropenia, Red Blood Cell Aplasia): Monitor with blood tests; consider treatment interruption or dose reduction. (5.4)
 - Gastrointestinal Complications: Monitor for complications such as bleeding, ulceration and perforations, particularly in patients with underlying gastrointestinal disorders. (5.5)
 - Hypoxanthine-Guanine Phosphoribosyl-Transferase Deficiency: Avoid use of MYHIBBIN. (5.6)
 - Acute Inflammatory Syndrome Associated with Mycophenolate Products: Monitor for this paradoxical inflammatory reaction. (5.7)
 - Immunizations: Avoid live attenuated vaccines. (5.8)
 - Blood Donation: Avoid during therapy and for 6 weeks thereafter. (5.9)
 - Semen Donation: Avoid during therapy and for 90 days thereafter. (5.10)
 - Potential Impairment on Driving and Use of Machinery: MYHIBBIN may affect ability to drive or operate machinery. (5.12)

ADVERSE REACTIONS
The most common adverse reactions in clinical trials (20 % or greater) include diarrhea, leukopenia, infection, vomiting, and there is evidence of a higher frequency of certain types of infections e.g., opportunistic infection. (6.1)

To report SUSPECTED ADVERSE REACTIONS, contact Azurity Pharmaceuticals, Inc. at 1-800-461-7449 or FDA at 1-800-FDA-1088 or www.fda.gov/medwatch.com.

- DRUG INTERACTIONS**
- See FPI for drugs that may interfere with systemic exposure and reduce MYHIBBIN efficacy: antacids with magnesium or aluminum hydroxide, proton pump inhibitors, drugs that interfere with enterohepatic recirculation, telmisartan, calcium-free phosphate binders. (7.1)
 - MYHIBBIN may reduce effectiveness of oral contraceptives. Use of additional barrier contraceptive methods is recommended. (7.2)
 - See FPI for other important drug interactions. (7)

- USE IN SPECIFIC POPULATIONS**
- Male Patients: Sexually active male patients and/or their female partners are recommended to use effective contraception during treatment of the male patient and for at least 90 days after cessation of treatment (8.3)

See 17 for PATIENT COUNSELING INFORMATION and Medication Guide

FULL PRESCRIBING INFORMATION: CONTENTS*

WARNING: EMBRYOFETAL TOXICITY, MALIGNANCIES, and SERIOUS INFECTIONS

1 INDICATIONS AND USAGE

2 DOSAGE AND ADMINISTRATION

- 2.1 Important Administration Instructions
- 2.2 Recommended Dosage for Kidney Transplant Patients
- 2.3 Recommended Dosage for Heart Transplant Patients
- 2.4 Recommended Dosage for Liver Transplant Patients
- 2.5 Dosage Modifications: Patients with Renal Impairment, Neutropenia

3 DOSAGE FORMS AND STRENGTHS

4 CONTRAINDICATIONS

5 WARNINGS AND PRECAUTIONS

- 5.1 Embryofetal Toxicity
- 5.2 Lymphoma and Other Malignancies
- 5.3 Serious Infections
- 5.4 Blood Dyscrasias: Neutropenia and Pure Red Cell Aplasia (PRCA)
- 5.5 Gastrointestinal Complications
- 5.6 Patients with Hypoxanthine-Guanine Phosphoribosyl-Transferase Deficiency (HGPRT)
- 5.7 Acute Inflammatory Syndrome Associated with Mycophenolate Products
- 5.8 Immunizations
- 5.9 Blood Donation
- 5.10 Semen Donation
- 5.11 Effect of Concomitant Medications on Mycophenolic Acid Concentrations
- 5.12 Potential Impairment of Ability to Drive or Operate Machinery

6 ADVERSE REACTIONS

- 6.1 Clinical Trials Experience
- 6.2 Postmarketing Experience

7 DRUG INTERACTIONS

- 7.1 Effect of Other Drugs on MYHIBBIN
- 7.2 Effect of MYHIBBIN on Other Drugs

8 USE IN SPECIFIC POPULATIONS

- 8.1 Pregnancy
- 8.2 Lactation

8.3 Females and Males of Reproductive Potential

8.4 Pediatric Use

8.5 Geriatric Use

8.6 Patients with Renal Impairment

8.7 Patients with Hepatic Impairment

10 OVERDOSAGE

11 DESCRIPTION

12 CLINICAL PHARMACOLOGY

12.1 Mechanism of Action

12.2 Pharmacodynamics

12.3 Pharmacokinetics

13 NONCLINICAL TOXICOLOGY

13.1 Carcinogenesis, Mutagenesis, Impairment of Fertility

14 CLINICAL STUDIES

14.1 Kidney Transplantation

14.2 Heart Transplantation

14.3 Liver Transplantation

15 REFERENCES

16 HOW SUPPLIED/STORAGE AND HANDLING

17 PATIENT COUNSELING INFORMATION

17.1 Embryofetal Toxicity

17.2 Development of Lymphoma and Other Malignancies

17.3 Increased Risk of Serious Infections

17.4 Blood Dyscrasias

17.5 Gastrointestinal Tract Complications

17.6 Acute Inflammatory Syndrome

17.7 Immunizations

17.8 Administration Instructions

17.9 Blood Donation

17.10 Semen Donation

17.11 Potential to Impair Driving and Use of Machinery

*Sections or subsections omitted from the full prescribing information are not listed.

FULL PRESCRIBING INFORMATION

WARNING: EMBRYOFETAL TOXICITY, MALIGNANCIES and SERIOUS INFECTIONS

- Use during pregnancy is associated with increased risks of first trimester pregnancy loss and congenital malformations. Avoid if safer treatment options are available. Females of reproductive potential must be counseled regarding pregnancy prevention and planning [see *Warnings and Precautions (5.1), Use in Special Populations (8.1, 8.3)*].
- Increased risk of development of lymphoma and other malignancies, particularly of the skin [see *Warnings and Precautions (5.2)*].
- Increased susceptibility to bacterial, viral, fungal and protozoal infections, including opportunistic infections and viral reactivation of hepatitis B and C, which may lead to hospitalizations and fatal outcomes [see *Warnings and Precautions (5.3)*].

1 INDICATIONS AND USAGE

MYHIBBIN is indicated for the prophylaxis of organ rejection, in adult and pediatric recipients 3 months of age and older of allogeneic kidney [see *Clinical Studies (14.1)*], heart [see *Clinical Studies (14.2)*] or liver transplants [see *Clinical Studies (14.3)*], in combination with other immunosuppressants.

2 DOSAGE AND ADMINISTRATION

2.1 Important Administration Instructions

MYHIBBIN should not be used without the supervision of a physician with experience in immunosuppressive therapy.

MYHIBBIN should not be used interchangeably with mycophenolic acid delayed-release tablets without supervision of a physician with experience in immunosuppressive therapy because the rates of absorption following the administration of MYHIBBIN and mycophenolic acid delayed-release tablets are not equivalent.

Patients should avoid contact of the skin or mucous membranes with MYHIBBIN. If such contact occurs, they must wash the area of contact thoroughly with soap and water. In case of ocular contact, rinse eyes with plain water.

The initial oral dose of MYHIBBIN should be given as soon as possible following kidney, heart or liver transplant. It is recommended that MYHIBBIN be administered on an empty stomach. In stable transplant patients, however, MYHIBBIN may be administered with food if necessary [*see Clinical Pharmacology (12.3)*]. MYHIBBIN must not be mixed with any liquids prior to dose administration. If needed, MYHIBBIN can be administered via a nasogastric tube with a minimum size of 8 French (minimum 1.7 mm interior diameter).

Patients should be instructed to take a missed dose as soon as they remember, except if it is closer than 2 hours to the next scheduled dose; in this case, they should continue to take MYHIBBIN at the usual times.

2.2 Recommended Dosage for Kidney Transplant Patients

Adults

The recommended dosage for adult kidney transplant patients is 1 g orally, administered twice daily (total daily dose of 2 g).

Pediatrics Patients 3 months and older

Pediatric dosing is based on body surface area (BSA). The recommended dosage for pediatric kidney transplant patients 3 months and older is 600 mg/m², administered twice daily (maximum daily dose of 2 g or 10 mL of the oral suspension).

2.3 Recommended Dosage for Heart Transplant Patients

Adults

The recommended dosage for adult heart transplant patients is 1.5 g orally administered twice daily (total daily dose of 3 g).

Pediatric Patients 3 months and older

The recommended starting dosage for pediatric heart transplant patients 3 months and older is 600 mg/m², administered twice daily. If well tolerated, the dose can be increased to a maintenance dosage of 900 mg/m² administered twice daily (maximum total daily dose of 3 g or 15 mL of the oral suspension). The dose may be individualized based on clinical assessment.

2.4 Recommended Dosage for Liver Transplant Patients

Adults

The recommended dosage for adult liver transplant patients is 1.5 g administered orally twice daily (total daily dose of 3 g).

Pediatrics Patients 3 months and older

The recommended starting dosage for pediatric liver transplant patients 3 months and older is 600 mg/m², administered twice daily. If well tolerated, the dose can be increased to a maintenance dosage of 900 mg/m² administered twice daily (maximum total daily dose of 3 g or 15 mL of the oral suspension). The dose may be individualized based on clinical assessment.

2.5 Dosage Modifications: Patients with Renal Impairment, Neutropenia

Renal Impairment

No dosage modifications are needed in kidney transplant patients with delayed graft function postoperatively [see *Clinical Pharmacology (12.3)*]. In kidney transplant patients with severe chronic impairment of the graft (GFR <25 mL/min/1.73 m²), do not administer doses of MYHIBBIN greater than 1 g twice a day. These patients should be carefully monitored [see *Clinical Pharmacology (12.3)*].

Neutropenia

If neutropenia develops (ANC <1.3 x 10³/μL), dosing with MYHIBBIN should be interrupted or reduced, appropriate diagnostic tests performed, and the patient managed appropriately [see *Warnings and Precautions (5.4) and Adverse Reactions (6.1)*].

3 DOSAGE FORMS AND STRENGTHS

Oral suspension: mycophenolate mofetil 200 mg/mL in a white to off-white suspension.

4 CONTRAINDICATIONS

Allergic reactions to mycophenolate mofetil have been observed; therefore, MYHIBBIN is contraindicated in patients with a hypersensitivity to mycophenolate mofetil (MMF), mycophenolic acid (MPA), polysorbate 80 (TWEEN) or any other component of the drug product.

5 WARNINGS AND PRECAUTIONS

5.1 Embryofetal Toxicity

Use of MMF during pregnancy is associated with an increased risk of first trimester pregnancy loss and an increased risk of congenital malformations, especially external ear and other facial abnormalities including cleft lip and palate, and anomalies of the distal limbs, heart, esophagus, kidney and nervous system. Females of reproductive potential must be made aware of these risks and must be counseled regarding pregnancy prevention and planning. Avoid use of MYHIBBIN during pregnancy if safer treatment options are available [see *Use in Specific Populations (8.1, 8.3)*].

5.2 Lymphoma and Other Malignancies

Patients receiving immunosuppressants, including MYHIBBIN, are at increased risk of developing lymphomas and other malignancies, particularly of the skin [see *Adverse Reactions (6.1)*]. The risk appears to be related to the intensity and duration of immunosuppression rather than to the use of any specific agent. For patients with increased risk for skin cancer, exposure to sunlight and UV light should be limited by wearing protective clothing and using a broad-spectrum sunscreen with a high protection factor.

Post-transplant lymphoproliferative disorder (PTLD) developed in 0.4% to 1% of patients receiving mycophenolate mofetil (2 g or 3 g) with other immunosuppressive agents in controlled clinical trials of kidney, heart and liver transplant patients [see *Adverse Reactions (6.1)*]. The majority of PTLD cases appear to be related to Epstein Barr Virus (EBV) infection. The risk of PTLD appears greatest in those individuals who are EBV seronegative, a population which includes many young children. In pediatric patients, no other malignancies besides PTLD were observed in clinical trials [see *Adverse Reactions (6.1)*].

5.3 Serious Infections

Patients receiving immunosuppressants, including MYHIBBIN, are at increased risk of developing bacterial, fungal, protozoal and new or reactivated viral infections, including opportunistic infections. The risk increases with the total immunosuppressive load. These infections may lead to serious outcomes, including hospitalizations and death [see *Adverse Reactions (6.1, 6.2)*].

Serious viral infections reported include:

- Polyomavirus-associated nephropathy (PVAN), especially due to BK virus infection
- JC virus-associated progressive multifocal leukoencephalopathy (PML), and
- Cytomegalovirus (CMV) infections: CMV seronegative transplant patients who receive an organ from a CMV seropositive donor are at highest risk of CMV viremia and CMV disease.
- Viral reactivation in patients infected with Hepatitis B and C
- COVID-19

Consider dose reduction or discontinuation of MYHIBBIN in patients who develop new infections or reactivate viral infections, weighing the risk that reduced immunosuppression represents to the functioning allograft.

PVAN, especially due to BK virus infection, is associated with serious outcomes, including deteriorating renal function and renal graft loss [see *Adverse Reactions (6.2)*]. Patient monitoring may help detect patients at risk for PVAN.

PML, which is sometimes fatal, commonly presents with hemiparesis, apathy, confusion, cognitive deficiencies, and ataxia [see *Adverse Reactions (6.2)*]. In immunosuppressed patients, physicians should consider PML in the differential diagnosis in patients reporting neurological symptoms.

The risk of CMV viremia and CMV disease is highest among transplant recipients seronegative for CMV at time of transplant who receive a graft from a CMV seropositive donor. Therapeutic approaches to limiting CMV disease exist and should be routinely provided. Patient monitoring may help detect patients at risk for CMV disease.

Viral reactivation has been reported in patients infected with HBV or HCV. Monitoring infected patients for clinical and laboratory signs of active HBV or HCV infection is recommended.

5.4 Blood Dyscrasias: Neutropenia and Pure Red Cell Aplasia (PRCA)

Severe neutropenia [absolute neutrophil count (ANC) $<0.5 \times 10^3/\mu\text{L}$] developed in transplant patients receiving MMF 3 g daily [see *Adverse Reactions (6.1)*]. Patients receiving MYHIBBIN should be monitored for neutropenia. Neutropenia has been observed most frequently in the period from 31 to 180 days post-transplant in patients treated for prevention of kidney, heart and liver rejection. The development of neutropenia may be related to MYHIBBIN itself, concomitant medications, viral infections, or a combination of these causes. If neutropenia develops (ANC $<1.3 \times 10^3/\mu\text{L}$), dosing with MYHIBBIN should be interrupted or the dose reduced, appropriate diagnostic tests performed, and the patient managed appropriately [see *Dosage and Administration (2.5)*].

Patients receiving MYHIBBIN should be instructed to report immediately any evidence of infection, unexpected bruising, bleeding or any other manifestation of bone marrow depression.

Consider monitoring with complete blood counts weekly for the first month, twice monthly for the second and third months, and monthly for the remainder of the first year.

Cases of pure red cell aplasia (PRCA) have been reported in patients treated with MMF in combination with other immunosuppressive agents. In some cases, PRCA was found to be reversible with dose reduction or cessation of MMF therapy. In transplant patients, however, reduced immunosuppression may place the graft at risk.

5.5 Gastrointestinal Complications

Gastrointestinal bleeding requiring hospitalization, ulceration and perforations were observed in clinical trials. Physicians should be aware of these serious adverse effects particularly when administering MYHIBBIN to patients with a gastrointestinal disease.

5.6 Patients with Hypoxanthine-Guanine Phosphoribosyl-Transferase Deficiency (HGPRT)

Mycophenolate mofetil is an inosine monophosphate dehydrogenase (IMPDH) inhibitor; therefore it should be avoided in patients with hereditary deficiencies of hypoxanthine-guanine phosphoribosyl-transferase (HGPRT) such as Lesch-Nyhan and Kelley-Seegmiller syndromes because it may cause an exacerbation of disease symptoms characterized by the overproduction and accumulation of uric acid leading to symptoms associated with gout such as acute arthritis, tophi, nephrolithiasis or urolithiasis and renal disease including renal failure.

5.7 Acute Inflammatory Syndrome Associated with Mycophenolate Products

Acute inflammatory syndrome (AIS) has been reported with the use of MMF and mycophenolate products, and some cases have resulted in hospitalization. AIS is a paradoxical pro-inflammatory reaction characterized by fever, arthralgias, arthritis, muscle pain and elevated inflammatory markers including, C-reactive protein and erythrocyte sedimentation rate, without evidence of infection or underlying disease recurrence. Symptoms occur within weeks to months of initiation of treatment or a dose increase. After discontinuation, improvement of symptoms and inflammatory markers are usually observed within 24 to 48 hours.

Monitor patients for symptoms and laboratory parameters of AIS when starting treatment with mycophenolate products or when increasing the dosage. Discontinue treatment and consider other treatment alternatives based on the risk and benefit for the patient.

5.8 Immunizations

During treatment with MYHIBBIN, the use of live attenuated vaccines should be avoided (e.g., intranasal influenza, measles, mumps, rubella, oral polio, BCG, yellow fever, varicella, and TY21a typhoid vaccines) and

patients should be advised that vaccinations may be less effective. Advise patients to discuss with the physician before seeking any immunizations.

5.9 Blood Donation

Patients should not donate blood during therapy and for at least 6 weeks following discontinuation of MYHIBBIN because their blood or blood products might be administered to a female of reproductive potential or a pregnant woman.

5.10 Semen Donation

Based on animal data, men should not donate semen during therapy and for 90 days following discontinuation of MYHIBBIN [*see Use In Specific Populations (8.3)*].

5.11 Effect of Concomitant Medications on Mycophenolic Acid Concentrations

A variety of drugs have potential to alter systemic MPA exposure when co-administered with MYHIBBIN. Therefore, determination of MPA concentrations in plasma before and after making any changes to immunosuppressive therapy, or when adding or discontinuing concomitant medications, may be appropriate to ensure MPA concentrations remain stable.

5.12 Potential Impairment of Ability to Drive or Operate Machinery

MYHIBBIN may impact the ability to drive and use machines. Patients should avoid driving or using machines if they experience somnolence, confusion, dizziness, tremor, or hypotension during treatment with MYHIBBIN [*see Adverse Reactions (6.1)*].

6 ADVERSE REACTIONS

The following adverse reactions are discussed in greater detail in other sections of the label:

- Embryofetal Toxicity [*see Warnings and Precautions (5.1)*]
- Lymphomas and Other Malignancies [*see Warnings and Precautions 5.2*]
- Serious Infections [*see Warnings and Precautions (5.3)*]
- Blood Dyscrasias: Neutropenia, Pure Red Cell Aplasia [*see Warnings and Precautions (5.4)*]
- Gastrointestinal Complications [*see Warnings and Precautions (5.5)*]
- Acute Inflammatory Syndrome Associated with Mycophenolate Products [*see Warnings and Precautions (5.7)*]

6.1 Clinical Trials Experience

Because clinical trials are conducted under widely varying conditions, adverse reaction rates observed in the clinical trials of a drug cannot be directly compared to rates in the clinical trials of another drug and may not reflect the rates observed in practice.

An estimated total of 1557 adult patients received mycophenolate mofetil during pivotal clinical trials in the prevention of acute organ rejection. Of these, 991 were included in the three renal studies, 277 were included in one hepatic study, and 289 were included in one cardiac study. Patients in all study arms also received cyclosporine and corticosteroids.

The data described below primarily derive from five randomized, active-controlled double-blind 12-month trials of mycophenolate mofetil in *de novo* kidney (3) heart (1) and liver (1) transplant patients [*see Clinical Studies*

(14.1, 14.2, and 14.3)].

Oral Mycophenolate Mofetil

The incidence of adverse reactions for mycophenolate mofetil was determined in five randomized, comparative, double-blind trials in the prevention of rejection in kidney, heart and liver transplant patients (two active- and one placebo- controlled trials, one active-controlled trial, and one active-controlled trial, respectively) [see *Clinical Studies (14.1, 14.2 and 14.3)*].

The three *de novo* kidney studies with 12-month duration compared two dose levels of oral mycophenolate mofetil (1 g twice daily and 1.5 g twice daily) with azathioprine (2 studies) or placebo (1 study) when administered in combination with cyclosporine (Sandimmune[®]) and corticosteroids to prevent acute rejection episodes. One study also included anti-thymocyte globulin (ATGAM[®]) induction therapy.

In the *de novo* heart transplantation study with 12-month duration, patients received mycophenolate mofetil 1.5 g twice daily (n=289) or azathioprine 1.5 to 3 mg/kg/day (n=289), in combination with cyclosporine (Sandimmune[®] or Neoral[®]) and corticosteroids as maintenance immunosuppressive therapy.

In the *de novo* liver transplantation study with 12-month duration, patients received mycophenolate mofetil 1.5 g twice daily orally or azathioprine 1 to 2 mg/kg/day orally, in combination with cyclosporine (Neoral[®]) and corticosteroids as maintenance immunosuppressive therapy. The total number of patients enrolled was 565.

Approximately 53% of the kidney transplant patients, 65% of the heart transplant patients, and 48% of the liver transplant patients were treated for more than 1 year. Adverse reactions reported in $\geq 20\%$ of patients in the mycophenolate mofetil treatment groups are presented below. The safety data of three kidney transplantation studies are pooled together.

Table 1 Adverse Reactions in Controlled Studies of De Novo Kidney, Heart or Liver Transplantation Reported in $\geq 20\%$ of Patients in the Mycophenolate Mofetil (MMF) Group

System Organ Class Adverse Drug Reaction	Kidney Studies			Heart Study		Liver Study	
	MMF 2g/day (n=501) or 3g/day (n=490)	AZA 1 to 2 mg/kg/day or 100 to 150 mg/day	Placebo	MMF 3g/day	AZA 1.5 to 3 mg/kg/day	MMF 3g/day	AZA 1 to 2 mg/kg/day
	(n=991)	(n=326)	(n=166)	(n=289)	(n=289)	(n=277)	(n=287)
	%	%	%	%	%	%	%
Infections and infestations							
Bacterial infections	39.9	33.7	37.3	-	-	27.4	26.5
Viral infections	- ^a	-	-	31.1	24.9	-	-
Blood and lymphatic system disorders							
Anemia	20.0	23.6	2.4	45.0	47.1	43.0	53.0
Ecchymosis	-	-	-	20.1	9.7	-	-
Leukocytosis	-	-	-	42.6	37.4	22.4	21.3
Leukopenia	28.6	24.8	4.2	34.3	43.3	45.8	39.0
Thrombocytopenia	-	-	-	24.2	28.0	38.3	42.2
Metabolism and nutrition disorders							
Hypercholesterolemia	-	-	-	46.0	43.9	-	-
Hyperglycemia	-	-	-	48.4	53.3	43.7	48.8
Hyperkalemia	-	-	-	-	-	22.0	23.7
Hypocalcemia	-	-	-	-	-	30.0	30.0
Hypokalemia	-	-	-	32.5	26.3	37.2	41.1
Hypomagnesemia	-	-	-	20.1	14.2	39.0	37.6

Psychiatric disorders							
Depression	-	-	-	20.1	15.2	-	-
Insomnia	-	-	-	43.3	39.8	52.3	47.0
Nervous system disorders							
Dizziness	-	-	-	34.3	33.9	-	-
Headache	-	-	-	58.5	55.4	53.8	49.1
Tremor	-	-	-	26.3	25.6	33.9	35.5
Cardiac disorders							
Tachycardia	-	-	-	22.8	21.8	22.0	15.7
Vascular disorders							
Hypertension	27.5	32.2	19.3	78.9	74.0	62.1	59.6
Hypotension	-	-	-	34.3	40.1	-	-
Respiratory, thoracic and mediastinal disorders							
Cough	-	-	-	40.5	32.2	-	-
Dyspnea	-	-	-	44.3	44.3	31.0	30.3
Pleural effusion	-	-	-	-	-	34.3	35.9
Gastrointestinal disorders							
Abdominal pain	22.4	23.0	11.4	41.9	39.4	62.5	51.2
Constipation	-	-	-	43.6	38.8	37.9	38.3
Decreased appetite	-	-	-	-	-	25.3	17.1
Diarrhea	30.4	20.9	13.9	52.6	39.4	51.3	49.8
Dyspepsia	-	-	-	22.1	22.1	22.4	20.9
Nausea	-	-	-	56.1	60.2	54.5	51.2
Vomiting	-	-	-	39.1	34.6	32.9	33.4
Hepatobiliary disorders							
Blood lactate dehydrogenase increased	-	-	-	23.5	18.3	-	-
Hepatic enzyme increased	-	-	-	-	-	24.9	19.2
Skin and subcutaneous tissues disorders							
Rash	-	-	-	26.0	20.8	-	-
Renal and urinary disorders							
Blood creatinine increased	-	-	-	42.2	39.8	-	-
Blood urea increased	-	-	-	36.7	34.3	-	-
General disorders and administration site conditions							
Asthenia	-	-	-	49.1	41.2	35.4	33.8
Edema ^b	21.0	28.2	8.4	67.5	55.7	48.4	47.7
Pain ^c	24.8	32.2	9.6	79.2	77.5	74.0	77.5
Pyrexia	-	-	-	56.4	53.6	52.3	56.1

^a: “-” Indicates that the incidence was below the cutoff value of 20% for inclusion in the table.

^b: “Edema” includes peripheral edema, facial edema, scrotal edema.

^c: “Pain” includes musculoskeletal pain (myalgia, neck pain, back pain).

In the three *de novo* kidney studies, patients receiving 2 g/day of mycophenolate mofetil had an overall better safety profile than did patients receiving 3 g/day of mycophenolate mofetil.

Post-transplant lymphoproliferative disease (PTLD, pseudolymphoma) developed in 0.4% to 1% of patients receiving mycophenolate mofetil (2 g or 3 g daily) with other immunosuppressive agents in controlled clinical trials of kidney, heart and liver transplant patients followed for at least 1 year [see *Warnings and Precautions* (5.2)]. Non-melanoma skin carcinomas occurred in 1.6% to 4.2% of patients, other types of malignancy in 0.7% to 2.1% of patients. Three-year safety data in kidney and heart transplant patients did not reveal any unexpected changes in incidence of malignancy compared to the 1-year data. In pediatric patients, PTLT was observed in 1.35% (2/148) by 12 months post-transplant.

Cytopenias, including leukopenia, anemia, thrombocytopenia and pancytopenia are a known risk associated with mycophenolate and may lead or contribute to the occurrence of infections and hemorrhages [see *Warnings and*

Precautions (5.3)]. Severe neutropenia (ANC <0.5 x 10³/μL) developed in up to 2% of kidney transplant patients, up to 2.8% of heart transplant patients and up to 3.6% of liver transplant patients receiving mycophenolate mofetil 3 g daily [see Warnings and Precautions (5.4) and Dosage and Administration (2.5)].

The most common opportunistic infections in patients receiving mycophenolate mofetil with other immunosuppressants were mucocutaneous candida, CMV viremia/syndrome, and herpes simplex. The proportion of patients with CMV viremia/syndrome was 13.5%. In patients receiving mycophenolate mofetil (2 g or 3 g) in controlled studies for prevention of kidney, heart or liver rejection, fatal infection/sepsis occurred in approximately 2% of kidney and heart patients and in 5% of liver patients [see Warnings and Precautions (5.3)]. The most serious gastrointestinal disorders reported were ulceration and hemorrhage, which are known risks associated with mycophenolate mofetil. Mouth, esophageal, gastric, duodenal, and intestinal ulcers often complicated by hemorrhage, as well as hematemesis, melena, and hemorrhagic forms of gastritis and colitis were commonly reported during the pivotal clinical trials, while the most common gastrointestinal disorders were diarrhea, nausea and vomiting. Endoscopic investigation of patients with mycophenolate mofetil-related diarrhea revealed isolated cases of intestinal villous atrophy [see Warnings and Precautions (5.5)].

The following adverse reactions were reported with 3% to <20% incidence in kidney, heart, and liver transplant patients treated with mycophenolate mofetil, in combination with cyclosporine and corticosteroids.

Table 2 Adverse Reactions in Controlled Studies of De Novo Kidney, Heart or Liver Transplantation Reported in 3% to <20% of Patients Treated with Mycophenolate Mofetil in Combination with Cyclosporine and Corticosteroids

System Organ Class	Adverse Reactions
Body as a Whole	cellulitis, chills, hernia, malaise
Infections and Infestations	fungal infections
Hematologic and Lymphatic	coagulation disorder, ecchymosis, pancytopenia
Urogenital	hematuria
Cardiovascular	hypotension
Metabolic and Nutritional	acidosis, alkaline phosphatase increased, hyperlipemia, hypophosphatemia, weight loss
Digestive	esophagitis, flatulence, gastritis, gastrointestinal hemorrhage, hepatitis, ileus, nausea and vomiting, stomach ulcer, stomatitis
Neoplasm benign, malignant and unspecified	neoplasm
Skin and Appendages	skin benign neoplasm, skin carcinoma
Psychiatric	confusional state
Nervous	hypertonia, paresthesia, somnolence
Musculoskeletal	arthralgia, myasthenia

Pediatrics

The type and frequency of adverse events in a clinical study for prevention of kidney allograft rejection in 100 pediatric patients 3 months to 18 years of age dosed with mycophenolate mofetil oral suspension 600 mg/m² twice daily (up to 1 g twice daily) were generally similar to those observed in adult patients dosed with mycophenolate mofetil capsules at a dose of 1 g twice daily with the exception of abdominal pain, fever, infection, pain, sepsis, diarrhea, vomiting, pharyngitis, respiratory tract infection, hypertension, leukopenia, and anemia, which were observed in a higher proportion in pediatric patients.

Safety information in pediatric heart transplant or pediatric liver transplant patients treated with mycophenolate mofetil is supported by an open-label study in pediatric liver transplant patients and publications; the type and frequency of the reported adverse reactions are consistent with those observed in pediatric patients following renal transplant and in adults.

Geriatrics

Geriatric patients (≥ 65 years), particularly those who are receiving mycophenolate mofetil as part of a combination immunosuppressive regimen, may be at increased risk of certain infections (including cytomegalovirus [CMV] tissue invasive disease) and possibly gastrointestinal hemorrhage and pulmonary edema, compared to younger individuals [see *Warnings and Precautions (5.3) and Adverse Reactions (6.1)*].

6.2 Postmarketing Experience

The following adverse reactions have been identified during post-approval use of mycophenolate mofetil. Because these reactions are reported voluntarily from a population of uncertain size, it is not always possible to reliably estimate their frequency or establish a causal relationship to drug exposure:

- Embryo-Fetal Toxicity: Congenital malformations and spontaneous abortions, mainly in the first trimester, have been reported following exposure to mycophenolate mofetil (MMF) in combination with other immunosuppressants during pregnancy [see *Warnings and Precautions (5.1), and Use in Specific Populations (8.1), (8.3)*]. Congenital malformations include:
 - Facial malformations: cleft lip, cleft palate, micrognathia, hypertelorism of the orbits
 - Abnormalities of the ear and eye: abnormally formed or absent external/middle ear, coloboma, microphthalmos
 - Malformations of the fingers: polydactyly, syndactyly, brachydactyly
 - Cardiac abnormalities: atrial and ventricular septal defects
 - Esophageal malformations: esophageal atresia
 - Nervous system malformations: such as spina bifida.
- Digestive: Colitis, pancreatitis
- Hematologic and Lymphatic: Bone marrow failure, cases of pure red cell aplasia (PRCA) and hypogammaglobulinemia have been reported in patients treated with mycophenolate mofetil in combination with other immunosuppressive agents [see *Warnings and Precautions (5.4)*].
- Immune: Hypersensitivity, hypogammaglobinemia.
- Infections: Meningitis, infectious endocarditis, tuberculosis, atypical mycobacterial infection, progressive multifocal leukoencephalopathy, BK virus infection, viral reactivation of hepatitis B and hepatitis C, protozoal infections [see *Warnings and Precautions (5.3)*].
- Respiratory: Bronchiectasis, interstitial lung disease, fatal pulmonary fibrosis, have been reported rarely and should be considered in the differential diagnosis of pulmonary symptoms ranging from dyspnea to respiratory failure in post-transplant patients receiving mycophenolate mofetil.
- Vascular: Lymphocele

7 DRUG INTERACTIONS

7.1 Effect of Other Drugs on MYHIBBIN

Table 3 Drug Interactions with MYHIBBIN that Affect Mycophenolic Acid (MPA) Exposure

Antacids with Magnesium or Aluminum Hydroxide	
<i>Clinical Impact</i>	Concomitant use with an antacid containing magnesium or aluminum hydroxide decreases MPA systemic exposure [see <i>Clinical Pharmacology (12.3)</i>], which may reduce MYHIBBIN efficacy.
<i>Prevention or Management</i>	Administer magnesium or aluminum hydroxide containing antacids at least 2h after MYHIBBIN.
Proton Pump Inhibitors (PPIs)	
<i>Clinical Impact</i>	Concomitant use with PPIs decreases MPA systemic exposure [see <i>Clinical Pharmacology (12.3)</i>], which may reduce MYHIBBIN efficacy.
<i>Prevention or Management</i>	Monitor patients for alterations in efficacy when PPIs are co-administered with MYHIBBIN.
<i>Examples</i>	Lansoprazole, pantoprazole
Drugs that Interfere with Enterohepatic Recirculation	
<i>Clinical Impact</i>	Concomitant use with drugs that directly interfere with enterohepatic recirculation, or indirectly interfere with enterohepatic recirculation by altering the gastrointestinal flora, can decrease MPA systemic exposure [see <i>Clinical Pharmacology (12.3)</i>], which may reduce MYHIBBIN efficacy.
<i>Prevention or Management</i>	Monitor patients for alterations in efficacy or MYHIBBIN -related adverse reactions when these drugs are co-administered with MYHIBBIN.
<i>Examples</i>	Cyclosporine A, trimethoprim/sulfamethoxazole, bile acid sequestrants (cholestyramine), rifampin as well as aminoglycoside, cephalosporin, fluoroquinolone and penicillin classes of antimicrobials
Drugs Modulating Glucuronidation	
<i>Clinical Impact</i>	Concomitant use with drugs inducing glucuronidation decreases MPA systemic exposure, potentially reducing MYHIBBIN efficacy, while use with drugs inhibiting glucuronidation increases MPA systemic exposure [see <i>Clinical Pharmacology (12.3)</i>], which may increase the risk of MYHIBBIN -related adverse reactions.
<i>Prevention or Management</i>	Monitor patients for alterations in efficacy or MYHIBBIN -related adverse reactions when these drugs are co-administered with MYHIBBIN.
<i>Examples</i>	Telmisartan (induces glucuronidation); isavuconazole (inhibits glucuronidation).
Calcium Free Phosphate Binders	
<i>Clinical Impact</i>	Concomitant use with calcium free phosphate binders decrease MPA systemic exposure [see <i>Clinical Pharmacology (12.3)</i>], which may reduce MYHIBBIN efficacy.
<i>Prevention or Management</i>	Administer calcium free phosphate binders at least 2 hours after MYHIBBIN.
<i>Examples</i>	Sevelamer

7.2 Effect of MYHIBBIN on Other Drugs

Table 4 Drug Interactions with MYHIBBIN that Affect Other Drugs

Drugs that Undergo Renal Tubular Secretion	
<i>Clinical Impact</i>	When concomitantly used with MYHIBBIN, its metabolite MPAG, may compete with drugs eliminated by renal tubular secretion which may increase plasma concentrations and/or adverse reactions associated with these drugs.
<i>Prevention or Management</i>	Monitor for drug-related adverse reactions in patients with renal impairment.

<i>Examples</i>	Acyclovir, ganciclovir, probenecid, valacyclovir, valganciclovir
Combination Oral Contraceptives	
<i>Clinical Impact</i>	Concomitant use with mycophenolate mofetil decreased the systemic exposure to levonorgestrel, but did not affect the systemic exposure to ethinylestradiol [<i>see Clinical Pharmacology (12.3)</i>], which may result in reduced combination oral contraceptive effectiveness.
<i>Prevention or Management</i>	Use additional barrier contraceptive methods.

8 USE IN SPECIFIC POPULATIONS

8.1 Pregnancy

Pregnancy Exposure Registry

There is a pregnancy exposure registry that monitors pregnancy outcomes in women exposed to mycophenolate during pregnancy and those becoming pregnant within 6 weeks of discontinuing MYHIBBIN treatment. To report a pregnancy or obtain information about the registry, visit the Mycophenolate Pregnancy Registry at www.mycophenolateREMS.com or call 1-800-617-8191.

Risk Summary

Use of mycophenolate mofetil (MMF) during pregnancy is associated with an increased risk of first trimester pregnancy loss and an increased risk of multiple congenital malformations in multiple organ systems (*see Human Data*). Oral administration of mycophenolate to rats and rabbits during the period of organogenesis produced congenital malformations and pregnancy loss at doses less than the recommended clinical dose (0.01 to 0.05 times the recommended clinical doses in kidney and heart transplant patients) (*see Animal Data*).

Consider alternative immunosuppressants with less potential for embryofetal toxicity. Risks and benefits of MYHIBBIN should be discussed with the pregnant woman.

The background risk of pregnancy loss and congenital malformations in organ transplant populations is not clear. In the U.S. general population, the estimated background risk of major birth defects and miscarriage in clinically recognized pregnancies is 2 to 4% and 15 to 20%, respectively.

Data

Human Data

A spectrum of congenital malformations (including multiple malformations in individual newborns) has been reported in 23 to 27% of live births in MMF exposed pregnancies, based on published data from pregnancy registries. Malformations that have been documented include external ear, eye, and other facial abnormalities including cleft lip and palate, and anomalies of the distal limbs, heart, esophagus, kidney, and nervous system.

Based on published data from pregnancy registries, the risk of first trimester pregnancy loss has been reported at 45 to 49% following MMF exposure.

Animal Data

In animal reproductive toxicology studies, there were increased rates of fetal resorptions and malformations in the absence of maternal toxicity. Oral administration of MMF to pregnant rats from Gestational Day 7 to Day 16 produced increased embryofetal lethality and fetal malformations including anophthalmia, agnathia, and

hydrocephaly at doses equivalent to 0.015 and 0.01 times the recommended human doses for renal and cardiac transplant patients, respectively, when corrected for BSA. Oral administration of MMF to pregnant rabbits from Gestational Day 7 to Day 19 produced increased embryofetal lethality and fetal malformations included ectopia cordis, ectopic kidneys, diaphragmatic hernia, and umbilical hernia at dose equivalents as low as 0.05 and 0.03 times the recommended human doses for renal and cardiac transplant patients, respectively, when corrected for BSA.

8.2 Lactation

Risk Summary

There are no data on the presence of mycophenolate in human milk, or the effects on milk production. There are limited data in the National Transplantation Pregnancy Registry on the effects of mycophenolate on a breastfed child (*see Data*). Studies in rats treated with MMF have shown mycophenolic acid (MPA) to be present in milk. Because available data are limited, it is not possible to exclude potential risks to a breastfeeding infant.

The developmental and health benefits of breastfeeding should be considered along with the mother's clinical need for MYHIBBIN and any potential adverse effects on the breastfed infant from MYHIBBIN or from the underlying maternal condition.

Data

Limited information is available from the National Transplantation Pregnancy Registry. Of seven infants reported by the National Transplantation Pregnancy Registry to have been breastfed while the mother was taking mycophenolate, all were born at 34-40 weeks gestation, and breastfed for up to 14 months. No adverse events were reported.

8.3 Females and Males of Reproductive Potential

Females of reproductive potential must be made aware of the increased risk of first trimester pregnancy loss and congenital malformations and must be counseled regarding pregnancy prevention and planning.

Pregnancy Planning

For patients who are considering pregnancy, consider alternative immunosuppressants with less potential for embryofetal toxicity whenever possible. Risks and benefits of MYHIBBIN should be discussed with the patient.

Pregnancy Testing

To prevent unplanned exposure during pregnancy, all females of reproductive potential should have a serum or urine pregnancy test with a sensitivity of at least 25 mIU/mL immediately before starting MYHIBBIN. Another pregnancy test with the same sensitivity should be done 8 to 10 days later. Repeat pregnancy tests should be performed during routine follow-up visits. Results of all pregnancy tests should be discussed with the patient. In the event of a positive pregnancy test, consider alternative immunosuppressants with less potential for embryofetal toxicity whenever possible.

Contraception

Female Patients

Females of reproductive potential taking MYHIBBIN must receive contraceptive counseling and use acceptable contraception (see **Table 5** for acceptable contraception methods). Patients must use acceptable birth control

during the entire MYHIBBIN therapy, and for 6 weeks after stopping MYHIBBIN, unless the patient chooses abstinence.

Patients should be aware that MYHIBBIN reduces blood levels of the hormones from the oral contraceptive pill and could theoretically reduce its effectiveness [see *Drug Interactions (7.2)*].

Table 5 Acceptable Contraception Methods for Females of Reproductive Potential Pick from the following birth control options:

Option 1	
Methods to Use Alone	<ul style="list-style-type: none"> • Intrauterine devices (IUDs) • Tubal sterilization • Patient's partner vasectomy

OR

Option 2	Hormone Methods choose 1		Barrier Methods choose 1
Choose One Hormone Method <i>AND</i> One Barrier Method	Estrogen and Progesterone <ul style="list-style-type: none"> • Oral Contraceptive Pill • Transdermal patch • Vaginal ring Progesterone-only <ul style="list-style-type: none"> • Injection • Implant 	<i>AND</i>	<ul style="list-style-type: none"> • Diaphragm with spermicide • Cervical cap with spermicide • Contraceptive sponge • Male condom • Female condom

OR

Option 3	Barrier Methods choose 1		Barrier Methods choose 1
Choose One Barrier Method from each column (<i>must choose two methods</i>)	<ul style="list-style-type: none"> • Diaphragm with spermicide • Cervical cap with spermicide • Contraceptive sponge 	<i>AND</i>	<ul style="list-style-type: none"> • Male condom • Female condom

Male Patients

Genotoxic effects have been observed in animal studies at exposures exceeding the human therapeutic exposures by approximately 1.25 times. Thus, the risk of genotoxic effects on sperm cells cannot be excluded. Based on this potential risk, sexually active male patients and/or their female partners are recommended to use effective contraception during treatment of the male patient and for at least 90 days after cessation of treatment. Also, based on the potential risk of genotoxic effects, male patients should not donate sperm during treatment with MYHIBBIN and for at least 90 days after cessation of treatment [see *Use in Special Populations (8.1)*, *Nonclinical Toxicology (13.1)*, *Patient Counseling Information (17.9)*].

8.4 Pediatric Use

Safety and effectiveness have been established in pediatric patients 3 months and older for the prophylaxis of organ rejection of allogenic kidney, heart or liver transplants.

Kidney Transplant

Use of MYHIBBIN in this population is supported by evidence from adequate and well-controlled studies of mycophenolate mofetil in adults with additional data from one open-label, pharmacokinetic and safety study of mycophenolate mofetil in pediatric patients after receiving allogeneic kidney transplant (100 patients, 3 months to 18 years of age) [see *Dosage and Administration (2.2)*, *Adverse Reactions (6.1)*, *Clinical Pharmacology (12.3)*, *Clinical Studies (14.1)*].

Heart Transplant and Liver Transplant

Use of MYHIBBIN in pediatric heart transplant and liver transplant patients is supported by adequate and well-controlled studies and pharmacokinetic data in adult heart transplant and liver transplant patients. Additional supportive data include pharmacokinetic data in pediatric kidney transplant and pediatric liver transplant patients (8 liver transplant patients, 9 months to 5 years of age, in an open-label, pharmacokinetic and safety study) and published evidence of clinical efficacy and safety in pediatric heart transplant and pediatric liver transplant patients [see *Dosage and Administration (2.3, 2.4)*, *Adverse Reactions (6.1)*, *Clinical Pharmacology (12.3)*, *Clinical Studies (14.1)*].

The combination of inactive ingredients (e.g., simethicone, sodium phosphate monobasic dihydrate, sodium phosphate dibasic dihydrate, glycerin) in MYHIBBIN have the potential to impact gastrointestinal tolerability. Monitor pediatric patients receiving MYHIBBIN for signs and symptoms of gastrointestinal intolerance.

8.5 Geriatric Use

Clinical studies of mycophenolate mofetil did not include sufficient numbers of subjects aged 65 and over to determine whether they respond differently from younger subjects. Other reported clinical experience has not identified differences in responses between geriatric and younger patients. In general, dose selection for a geriatric patient should take into consideration the presence of decreased hepatic, renal or cardiac function and of concomitant drug therapies. [see *Adverse Reactions (6.1)*, *Drug Interactions (7)*].

8.6 Patients with Renal Impairment

Patients with Kidney Transplant

No dosage adjustments are needed in kidney transplant patients experiencing delayed graft function postoperatively, but patients should be carefully monitored [see *Clinical Pharmacology (12.3)*]. In kidney transplant patients with severe chronic impairment of the graft (GFR <25 mL/min/1.73 m²), no dose adjustments are necessary; however, doses greater than 1 g administered twice a day should be avoided.

Patients with Heart and Liver Transplant

No data are available for heart or liver transplant patients with severe chronic renal impairment. MYHIBBIN may be used for heart or liver transplant patients with severe chronic renal impairment if the potential benefits outweigh the potential risks.

8.7 Patients with Hepatic Impairment

Patients with Kidney Transplant

No dosage adjustments are recommended for kidney transplant patients with severe hepatic parenchymal disease. However, it is not known whether dosage adjustments are needed for hepatic disease with other etiologies [see *Clinical Pharmacology (12.3)*].

Patients with Heart Transplant

No data are available for heart transplant patients with severe hepatic parenchymal disease.

10 OVERDOSAGE

Possible signs and symptoms of acute overdose include hematological abnormalities such as leukopenia and neutropenia, and gastrointestinal symptoms such as abdominal pain, diarrhea, nausea, vomiting, and dyspepsia.

The experience with overdose of mycophenolate mofetil in humans is limited. The reported effects associated with overdose fall within the known safety profile of the drug. The highest dose administered to kidney transplant patients in clinical trials has been 4 g/day. In limited experience with heart and liver transplant patients in clinical trials, the highest doses used were 4 g/day or 5 g/day. At doses of 4 g/day or 5 g/day, there appears to be a higher rate, compared to the use of 3 g/day or less, of gastrointestinal intolerance (nausea, vomiting, and/or diarrhea), and occasional hematologic abnormalities, particularly neutropenia [see *Warnings and Precautions (5.4)*].

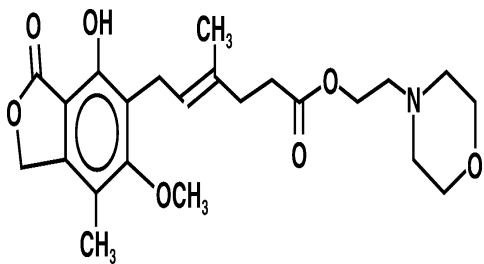
Treatment and Management

MPA and the phenolic glucuronide metabolite of MPA (MPAG) are usually not removed by hemodialysis. However, at high MPAG plasma concentrations (>100 µg/mL), small amounts of MPAG are removed. By increasing excretion of the drug, MPA can be removed by bile acid sequestrants, such as cholestyramine [see *Clinical Pharmacology (12.3)*].

11 DESCRIPTION

MYHIBBIN (mycophenolate mofetil) is an antimetabolite immunosuppressant. It is the 2-morpholinoethyl ester of mycophenolic acid (MPA), an immunosuppressive agent; inosine monophosphate dehydrogenase (IMPDH) inhibitor.

The chemical name for mycophenolate mofetil (MMF) is 4-Hexenoic acid, 6-(1,3-dihydro-4-hydroxy-6-methoxy-7-methyl-3-oxo-5-isobenzofuranyl)-4-methyl-,2-(4-morpholinyl) ethyl ester, (E)-. It has an empirical formula of C₂₃H₃₁NO₇, a molecular weight of 433.49, and the following structural formula:



MMF is a white or almost white, crystalline powder. It is slightly soluble in water (43 µg/mL at pH 7.4); the solubility increases in acidic medium (4.27 mg/mL at pH 3.6).

The drug product is an oral suspension that contains 200 mg of mycophenolate mofetil/mL. The pH of suspension is between 6 and 8.

Inactive ingredients in MYHIBBIN include dibasic sodium phosphate, glycerin, methylparaben, monobasic sodium phosphate, polysorbate 80, propylparaben, purified water, raspberry flavor, simethicone emulsion, sorbitol solution, and xanthan gum.

12 CLINICAL PHARMACOLOGY

12.1 Mechanism of Action

Mycophenolate mofetil (MMF) is absorbed following oral administration and hydrolyzed to mycophenolic acid (MPA), the active metabolite. MPA is a selective uncompetitive inhibitor of the two isoforms (type I and type II) of inosine monophosphate dehydrogenase (IMPDH) leading to inhibition of the *de novo* pathway of guanosine nucleotide synthesis and blocks DNA synthesis. The mechanism of action of MPA is multifaceted and includes effects on cellular checkpoints responsible for metabolic programming of lymphocytes. MPA shifts transcriptional activities in lymphocytes from a proliferative state to catabolic processes. In vitro studies suggest that MPA modulates transcriptional activities in human CD4+ T-lymphocytes by suppressing the Akt/mTOR and STAT5 pathways that are relevant to metabolism and survival, leading to an anergic state of T-cells whereby the cells become less responsive to antigenic stimulation. Additionally, MPA enhanced the expression of negative co-stimulators such as CD70, PD-1, CTLA-4, and transcription factor FoxP3 as well as decreased the expression of positive co-stimulators CD27 and CD28.

MPA decreases proliferative responses of T- and B-lymphocytes to both mitogenic and allo-antigenic stimulation, antibody responses, as well as the production of cytokines from lymphocytes and monocytes such as GM-CSF, IFN- γ , IL-17, and TNF- α . Additionally, MPA prevents the glycosylation of lymphocyte and monocyte glycoproteins that are involved in intercellular adhesion to endothelial cells and may inhibit recruitment of leukocytes into sites of inflammation and graft rejection.

Overall, the effect of MPA is cytostatic and reversible.

12.2 Pharmacodynamics

There is a lack of information regarding the pharmacodynamic effects of MMF.

12.3 Pharmacokinetics

Absorption

Following oral administration, MMF undergoes complete conversion to MPA, the active metabolite. In 12 healthy volunteers, the mean absolute bioavailability of oral MMF relative to intravenous MMF was 94%.

The mean (\pm SD) pharmacokinetic parameters estimates for MPA following the administration of MMF given as single doses to healthy volunteers, and multiple doses to kidney, heart, and liver transplant patients, are shown in **Table 6**. The area under the plasma-concentration time curve (AUC) for MPA appears to increase in a dose-proportional fashion in kidney transplant patients receiving multiple oral doses of MMF up to a daily dose of 3 g (1.5g twice daily) (see **Table 6**).

Table 6 Pharmacokinetic Parameters for MPA [mean (\pm SD)] Following Administration of MMF to Healthy Volunteers (Single Dose), and Kidney, Heart, and Liver Transplant Patients (Multiple Doses)

Healthy Volunteers	Dose/Route	T _{max} (h)	C _{max} (mcg/mL)	Total AUC (mcg•h/mL)
Single dose	1 g/oral	0.80 (\pm 0.36) (n=129)	24.5 (\pm 9.5) (n=129)	63.9 (\pm 16.2) (n=117)
Kidney Transplant Patients (twice daily dosing) Time After Transplantation	Dose/Route	T _{max} (h)	C _{max} (mcg/mL)	Interdosing Interval AUC(0- 12h) (mcg•h/mL)
5 days	1 g	1.58 (\pm 0.46) (n=31)	12.0 (\pm 3.82) (n=31)	40.8 (\pm 11.4) (n=31)

6 days	1 g/oral	1.33 (±1.05) (n=31)	10.7 (±4.83) (n=31)	32.9 (±15.0) (n=31)
Early (Less than 40 days)	1 g/oral	1.31 (±0.76) (n=25)	8.16 (±4.50) (n=25)	27.3 (±10.9) (n=25)
Early (Less than 40 days)	1.5 g/oral	1.21 (±0.81) (n=27)	13.5 (±8.18) (n=27)	38.4 (±15.4) (n=27)
Late (Greater than 3 months)	1.5 g/oral	0.90 (±0.24) (n=23)	24.1 (±12.1) (n=23)	65.3 (±35.4) (n=23)
Heart Transplant Patients (twice daily dosing) Time After Transplantation	Dose/Route	T_{max} (h)	C_{max} (mcg/mL)	Interdosing Interval AUC(0- 12h) (mcg•h/mL)
Early (Day before discharge)	1.5 g/oral	1.8 (±1.3) (n=11)	11.5 (±6.8) (n=11)	43.3 (±20.8) (n=9)
Late (Greater than 6 months)	1.5 g/oral	1.1 (±0.7) (n=52)	20.0 (±9.4) (n=52)	54.1 ^a (±20.4) (n=49)
Liver Transplant Patients (twice daily dosing) Time After Transplantation	Dose/Route	T_{max} (h)	C_{max} (mcg/mL)	Interdosing Interval AUC(0- 12h) (mcg•h/mL)
4 to 9 days	1 g	1.50 (±0.517) (n=22)	17.0 (±12.7) (n=22)	34.0 (±17.4) (n=22)
Early (5 to 8 days)	1.5 g/oral	1.15 (±0.432) (n=20)	13.1 (±6.76) (n=20)	29.2 (±11.9) (n=20)
Late (Greater than 6 months)	1.5 g/oral	1.54 (±0.51) (n=6)	19.3 (±11.7) (n=6)	49.3 (±14.8) (n=6)

^aAUC(0-12h) values quoted are extrapolated from data from samples collected over 4 hours.

In the early post-transplant period (less than 40 days post-transplant), kidney, heart, and liver transplant patients had mean MPA AUCs approximately 20% to 41% lower and mean C_{max} approximately 32% to 44% lower compared to the late transplant period (i.e., 3 to 6 months post-transplant) (non-stationarity in MPA pharmacokinetics).

In liver transplant patients, administration of 1.5 g twice daily oral MMF resulted in mean MPA AUC estimates similar to those found in kidney transplant patients administered 1 g MMF twice daily.

Effect of Food

Food (27 g fat, 650 calories) had no effect on the extent of absorption (MPA AUC) of MMF when administered at doses of 1.5 g twice daily to kidney transplant patients. However, MPA C_{max} was decreased by 40% in the presence of food [see *Dosage and Administration (2.1)*].

Distribution

The mean (±SD) apparent volume of distribution of MPA in 12 healthy volunteers was approximately 3.6 (±1.5) L/kg. At clinically relevant concentrations, MPA is 97% bound to plasma albumin. The phenolic glucuronide metabolite of MPA (MPAG) is 82% bound to plasma albumin at MPAG concentration ranges that are normally seen in stable kidney transplant patients; however, at higher MPAG concentrations (observed in patients with kidney impairment or delayed kidney graft function), the binding of MPA may be reduced as a result of competition between MPAG and MPA for protein binding. Mean blood to plasma ratio of radioactivity concentrations was approximately 0.6 indicating that MPA and MPAG do not extensively distribute into the cellular fractions of blood.

In vitro studies to evaluate the effect of other agents on the binding of MPA to human serum albumin (HSA) or plasma proteins showed that salicylate (at 25 mg/dL with human serum albumin) and MPAG (at ≥ 460 mcg/mL with plasma proteins) increased the free fraction of MPA. MPA at concentrations as high as 100 mcg/mL had little effect on the binding of warfarin, digoxin or propranolol, but decreased the binding of theophylline from

53% to 45% and phenytoin from 90% to 87%.

Elimination

Mean (\pm SD) apparent half-life and plasma clearance of MPA are 17.9 (\pm 6.5) hours and 193 (\pm 48) mL/min following oral administration.

Metabolism

MPA is metabolized principally by glucuronyl transferase to form MPAG, which is not pharmacologically active. *In vivo*, MPAG is converted to MPA during enterohepatic recirculation. The following metabolites of the 2-hydroxyethyl-morpholino moiety are also recovered in the urine following oral administration of MMF to healthy subjects: N-(2-carboxymethyl)-morpholine, N-(2-hydroxyethyl)-morpholine, and the N-oxide of N-(2-hydroxyethyl)-morpholine.

Due to the enterohepatic recirculation of MPAG/MPA, secondary peaks in the plasma MPA concentration-time profile are usually observed 6 to 12 hours post-dose. Bile sequestrants, such as cholestyramine, reduce MPA AUC by interfering with this enterohepatic recirculation of the drug [*see Overdosage (10) and Drug Interaction Studies below*].

Excretion

Negligible amount of drug is excreted as MPA (less than 1% of dose) in the urine. Orally administered radiolabeled MMF resulted in complete recovery of the administered dose, with 93% of the administered dose recovered in the urine and 6% recovered in feces. Most (about 87%) of the administered dose is excreted in the urine as MPAG. At clinically encountered concentrations, MPA and MPAG are usually not removed by hemodialysis. However, at high MPAG plasma concentrations (> 100 mcg/mL), small amounts of MPAG are removed.

Increased plasma concentrations of MMF metabolites (MPA 50% increase and MPAG about a 3-fold to 6-fold increase) are observed in patients with renal insufficiency [*see Specific Populations*].

Specific Populations

Patients with Renal Impairment

The mean (\pm SD) pharmacokinetic parameters for MPA following the administration of oral MMF given as single doses to non-transplant subjects with renal impairment are presented in **Table 7**.

Plasma MPA AUC observed after oral dosing to volunteers with severe chronic renal impairment (GFR < 25 mL/min/1.73 m²) was about 75% higher relative to that observed in healthy volunteers (GFR > 80 mL/min/1.73 m²). In addition, the single-dose plasma MPAG AUC was 3-fold to 6-fold higher in volunteers with severe renal impairment than in volunteers with mild renal impairment or healthy volunteers, consistent with the known renal elimination of MPAG. No data are available on the safety of long-term exposure to this level of MPAG. Multiple dosing of MMF in patients with severe chronic renal impairment has not been studied.

Patients with Delayed Graft Function or Nonfunction

In patients with delayed renal graft function post-transplant, mean MPA AUC(0-12h) was comparable to that seen in post-transplant patients without delayed renal graft function. There is a potential for a transient increase in the free fraction and concentration of plasma MPA in patients with delayed renal graft function. However, dose adjustment does not appear to be necessary in patients with delayed renal graft function. Mean plasma MPAG

AUC(0-12h) was 2-fold to 3-fold higher than in post-transplant patients without delayed renal graft function [see *Dosage and Administration (2.5)*].

In eight patients with primary graft non-function following kidney transplantation, plasma concentrations of MPAG accumulated about 6-fold to 8-fold after multiple dosing for 28 days. Accumulation of MPA was about 1-fold to 2-fold.

The pharmacokinetics of MMF are not altered by hemodialysis. Hemodialysis usually does not remove MPA or MPAG. At high concentrations of MPAG (> 100 mcg/mL), hemodialysis removes only small amounts of MPAG.

Patients with Hepatic Impairment

The mean (\pm SD) pharmacokinetic parameters for MPA following the administration of oral MMF given as single doses to non-transplant subjects with hepatic impairment is presented in **Table 7**.

In a single-dose (1 g oral) study of 18 volunteers with alcoholic cirrhosis and 6 healthy volunteers, hepatic MPA glucuronidation processes appeared to be relatively unaffected by hepatic parenchymal disease when pharmacokinetic parameters of healthy volunteers and alcoholic cirrhosis patients within this study were compared. However, it should be noted that for unexplained reasons, the healthy volunteers in this study had about a 50% lower AUC as compared to healthy volunteers in other studies, thus making comparisons between volunteers with alcoholic cirrhosis and healthy volunteers difficult.

Table 7 Pharmacokinetic Parameters for MPA [mean (\pm SD)] Following Single Doses of MMF Capsules in Chronic Renal and Hepatic Impairment

Pharmacokinetic Parameters for Renal Impairment				
	Dose	T_{max} (h)	C_{max} (mcg/mL)	AUC(0-96h) (mcg•h/mL)
Healthy Volunteers GFR greater than 80 mL/min/1.73 m ² (n=6)	1 g	0.75 (\pm 0.27)	25.3 (\pm 7.99)	45.0 (\pm 22.6)
Mild Renal Impairment GFR 50 to 80 mL/min/1.73 m ² (n=6)	1 g	0.75 (\pm 0.27)	26.0 (\pm 3.82)	59.9 (\pm 12.9)
Moderate Renal Impairment GFR 25 to 49 mL/min/1.73 m ² (n=6)	1 g	0.75 (\pm 0.27)	19.0 (\pm 13.2)	52.9 (\pm 25.5)
Severe Renal Impairment GFR less than 25 mL/min/1.73 m ² (n=7)	1 g	1.00 (\pm 0.41)	16.3 (\pm 10.8)	78.6 (\pm 46.4)
Pharmacokinetic Parameters for Hepatic Impairment				
	Dose	T_{max} (h)	C_{max} (mcg/mL)	AUC(0-48h) (mcg•h/mL)
Healthy Volunteers (n=6)	1 g	0.63 (\pm 0.14)	24.3 (\pm 5.73)	29.0 (\pm 5.78)
Alcoholic Cirrhosis (n=18)	1 g	0.85 (\pm 0.58)	22.4 (\pm 10.1)	29.8 (\pm 10.7)

Pediatric Patients

The pharmacokinetic parameters of MPA and MPAG have been evaluated in 55 pediatric patients (ranging from 1 year to 18 years of age) receiving MMF oral suspension at a dose of 600 mg/m² twice daily (up to a maximum of 1 g twice daily) after allogeneic kidney transplantation. The pharmacokinetic data for MPA is provided in **Table 8**.

Table 8 Mean (\pm SD) Computed Pharmacokinetic Parameters for MPA by Age and Time After Allogeneic Kidney Transplantation

Age Group	(n)	Time	T _{max} (h)		Dose Adjusted ^a C _{max} (mcg/mL)		Dose Adjusted ^a AUC ₀₋₁₂ (mcg•h/mL)	
1 to less than 2 yr	(6) ^d	Early (Day 7)	3.03	(4.70)	10.3	(5.80)	22.5	(6.66)
1 to less than 6 yr	(17)		1.63	(2.85)	13.2	(7.16)	27.4	(9.54)
6 to less than 12 yr	(16)		0.940	(0.546)	13.1	(6.30)	33.2	(12.1)
12 to 18 yr	(21)		1.16	(0.830)	11.7	(10.7)	26.3	(9.14) ^b
1 to less than 2 yr	(4) ^d	Late (Month 3)	0.725	(0.276)	23.8	(13.4)	47.4	(14.7)
1 to less than 6 yr	(15)		0.989	(0.511)	22.7	(10.1)	49.7	(18.2)
6 to less than 12 yr	(14)		1.21	(0.532)	27.8	(14.3)	61.9	(19.6)
12 to 18 yr	(17)		0.978	(0.484)	17.9	(9.57)	53.6	(20.3) ^c
1 to less than 2 yr	(4) ^d	Late (Month 9)	0.604	(0.208)	25.6	(4.25)	55.8	(11.6)
1 to less than 6 yr	(12)		0.869	(0.479)	30.4	(9.16)	61.0	(10.7)
6 to less than 12 yr	(11)		1.12	(0.462)	29.2	(12.6)	66.8	(21.2)
12 to 18 yr	(14)		1.09	(0.518)	18.1	(7.29)	56.7	(14.0)

^a adjusted to a dose of 600 mg/m²

^b n=20

^c n=16

^d a subset of 1 to <6 yr

The MMF oral suspension dose of 600 mg/m² twice daily (up to a maximum of 1 g twice daily) achieved mean MPA AUC values in pediatric patients similar to those seen in adult kidney transplant patients receiving oral doses of 1 g twice daily in the early post-transplant period. There was wide variability in the data. As observed in adults, early post-transplant MPA AUC values were approximately 45% to 53% lower than those observed in the later post-transplant period (>3 months). MPA AUC values were similar in the early and late post-transplant period across the 1 to 18-year age range.

A comparison of dose-normalized (to 600 mg/m²) MPA AUC values in 12 pediatric kidney transplant patients less than 6 years of age at 9 months post-transplant with those values in 7 pediatric liver transplant patients [median age 17 months (range: 10 – 60 months)] and at 6 months and beyond post-transplant revealed that, at the same dose, there were on average 23% lower AUC values in the pediatric liver compared to pediatric kidney patients. This is consistent with the need for higher dosing in adult liver transplant patients compared to kidney transplant patients to achieve the same exposure.

In adult transplant patients administered the same dosage of MMF, there is similar MPA exposure among kidney transplant and heart transplant patients. Based on the established similarity in MPA exposure between pediatric kidney transplant and adult kidney transplant patients at their respective approved doses, it is expected that MPA exposure at the recommended dosage will be similar in pediatric heart transplant and adult heart transplant patients.

Male and Female Patients

Data obtained from several studies were pooled to look at any gender-related differences in the pharmacokinetics of MPA (data were adjusted to 1 g oral dose). Mean (\pm SD) MPA AUC (0-12h) for males (n=79) was 32.0 (\pm 14.5) and for females (n=41) was 36.5 (\pm 18.8) mcg•h/mL while mean (\pm SD) MPA C_{max} was 9.96 (\pm 6.19) in the males and 10.6 (\pm 5.64) mcg/mL in the females. These differences are not of clinical significance.

Geriatric Patients

The pharmacokinetics of MMF and its metabolites have not been found to be altered in geriatric transplant patients when compared to younger transplant patients.

Drug Interaction Studies

Acyclovir

Coadministration of MMF (1 g) and acyclovir (800 mg) to 12 healthy volunteers resulted in no significant change in MPA AUC and C_{max} . However, MPAG and acyclovir plasma AUCs were increased 10.6% and 21.9%, respectively.

Antacids with Magnesium and Aluminum Hydroxides

Absorption of a single dose of MMF (2 g) was decreased when administered to 10 rheumatoid arthritis patients also taking Maalox[®] TC (10 mL qid). The C_{max} and AUC(0-24h) for MPA were 33% and 17% lower, respectively, than when MMF was administered alone under fasting conditions.

Proton Pump Inhibitors (PPIs)

Coadministration of PPIs (e.g., lansoprazole, pantoprazole) in single doses to healthy volunteers and multiple doses to transplant patients receiving MMF has been reported to reduce the exposure to MPA. An approximate reduction of 30 to 70% in the C_{max} and 25% to 35% in the AUC of MPA has been observed, possibly due to a decrease in MPA solubility at an increased gastric pH.

Cholestyramine

Following single-dose administration of 1.5 g MMF to 12 healthy volunteers pretreated with 4 g three times a day of cholestyramine for 4 days, MPA AUC decreased approximately 40%. This decrease is consistent with interruption of enterohepatic recirculation which may be due to binding of recirculating MPAG with cholestyramine in the intestine.

Cyclosporine

Cyclosporine (Sandimmune[®]) pharmacokinetics (at doses of 275 to 415 mg/day) were unaffected by single and multiple doses of 1.5 g twice daily of MMF in 10 stable kidney transplant patients. The mean (\pm SD) AUC(0-12h) and C_{max} of cyclosporine after 14 days of multiple doses of MMF were 3290 (\pm 822) ng•h/mL and 753 (\pm 161) ng/mL, respectively, compared to 3245 (\pm 1088) ng•h/mL and 700 (\pm 246) ng/mL, respectively, 1 week before administration of MMF.

Cyclosporine A interferes with MPA enterohepatic recirculation. In kidney transplant patients, mean MPA exposure (AUC(0-12h)) was approximately 30-50% greater when MMF was administered without cyclosporine compared with when MMF was coadministered with cyclosporine. This interaction is due to cyclosporine inhibition of multidrug-resistance-associated protein 2 (MRP-2) transporter in the biliary tract, thereby preventing the excretion of MPAG into the bile that would lead to enterohepatic recirculation of MPA. This information should be taken into consideration when MMF is used without cyclosporine.

Drugs Affecting Glucuronidation

Concomitant administration of drugs inhibiting glucuronidation of MPA may increase MPA exposure (e.g., increase of MPA AUC (0- ∞) by 35% was observed with concomitant administration of isavuconazole).

Concomitant administration of telmisartan and MMF resulted in an approximately 30% decrease in MPA concentrations. Telmisartan changes MPA's elimination by enhancing PPAR gamma (peroxisome proliferator-activated receptor gamma) expression, which in turn results in an enhanced UGT1A9 expression and glucuronidation activity.

Ganciclovir

Following single-dose administration to 12 stable kidney transplant patients, no pharmacokinetic interaction was observed between MMF (1.5 g) and intravenous ganciclovir (5 mg/kg). Mean (\pm SD) ganciclovir AUC and C_{max} (n=10) were 54.3 (\pm 19.0) mcg·h/mL and 11.5 (\pm 1.8) mcg/mL, respectively, after coadministration of the two drugs, compared to 51.0 (\pm 17.0) mcg·h/mL and 10.6 (\pm 2.0) mcg/mL, respectively, after administration of intravenous ganciclovir alone. The mean (\pm SD) AUC and C_{max} of MPA (n=12) after coadministration were 80.9 (\pm 21.6) mcg·h/mL and 27.8 (\pm 13.9) mcg/mL, respectively, compared to values of 80.3 (\pm 16.4) μ g·h/mL and 30.9 (\pm 11.2) mcg/mL, respectively, after administration of MMF alone.

Oral Contraceptives

A study of coadministration of MMF (1 g twice daily) and combined oral contraceptives containing ethinylestradiol (0.02 mg to 0.04 mg) and levonorgestrel (0.05 mg to 0.20 mg), desogestrel (0.15 mg) or gestodene (0.05 mg to 0.10 mg) was conducted in 18 women with psoriasis over 3 consecutive menstrual cycles. Mean serum levels of LH, FSH and progesterone were not significantly affected. Mean AUC(0-24h) was similar for ethinylestradiol and 3-keto desogestrel; however, mean levonorgestrel AUC(0-24h) significantly decreased by about 15%. There was large inter-patient variability (%CV in the range of 60% to 70%) in the data, especially for ethinylestradiol.

Sevelamer

Concomitant administration of sevelamer and MMF in adult and pediatric patients decreased the mean MPA C_{max} and AUC (0-12h) by 36% and 26% respectively.

Antimicrobials

Antimicrobials eliminating beta-glucuronidase-producing bacteria in the intestine (e.g. aminoglycoside, cephalosporin, fluoroquinolone, and penicillin classes of antimicrobials) may interfere with the MPAG/MPA enterohepatic recirculation thus leading to reduced systemic MPA exposure. Information concerning antibiotics is as follows:

- Trimethoprim/Sulfamethoxazole: Following single-dose administration of MMF (1.5 g) to 12 healthy male volunteers on day 8 of a 10-day course of trimethoprim 160 mg/sulfamethoxazole 800 mg administered twice daily, no effect on the bioavailability of MPA was observed. The mean (\pm SD) AUC and C_{max} of MPA after concomitant administration were 75.2 (\pm 19.8) mcg·h/mL and 34.0 (\pm 6.6) μ g/mL, respectively, compared to 79.2 (\pm 27.9) mcg·h/mL and 34.2 (\pm 10.7) mcg/mL, respectively, after administration of MMF alone.
- Norfloxacin and Metronidazole: Following single-dose administration of MMF (1 g) to 11 healthy volunteers on day 4 of a 5-day course of a combination of norfloxacin and metronidazole, the mean MPA AUC(0-48h) was significantly reduced by 33% compared to the administration of MMF alone ($p < 0.05$). The mean (\pm SD) MPA AUC(0-48h) after coadministration of MMF with norfloxacin or metronidazole separately was 48.3 (\pm 24) mcg·h/mL and 42.7 (\pm 23) mcg·h/mL, respectively, compared with 56.2 (\pm 24) mcg·h/mL after administration of MMF alone.
- Ciprofloxacin and Amoxicillin Plus Clavulanic Acid: A total of 64 MMF-treated kidney transplant recipients

received either oral ciprofloxacin 500 mg twice daily or amoxicillin plus clavulanic acid 375 mg three times daily for 7 or at least 14 days, respectively. Approximately 50% reductions in median trough MPA concentrations (pre-dose) from baseline (MMF alone) were observed in 3 days following commencement of oral ciprofloxacin or amoxicillin plus clavulanic acid. These reductions in trough MPA concentrations tended to diminish within 14 days of antimicrobial therapy and ceased within 3 days of discontinuation of antibiotics.

- Rifampin: In a single heart-lung transplant patient, after correction for dose, a 67% decrease in MPA exposure (AUC(0-12h)) has been observed with concomitant administration of MMF and rifampin.

13 NONCLINICAL TOXICOLOGY

13.1 Carcinogenesis, Mutagenesis, Impairment of Fertility

In a 104-week oral carcinogenicity study in mice, MMF in daily doses up to 180 mg/kg was not tumorigenic. The highest dose tested was 0.2 times the recommended clinical dose (2 g/day) in renal transplant patients and 0.15 times the recommended clinical dose (3 g/day) in cardiac transplant patients when corrected for differences in body surface area (BSA). In a 104-week oral carcinogenicity study in rats, MMF in daily doses up to 15 mg/kg was not tumorigenic. The highest dose was 0.035 times the recommended clinical dose in kidney transplant patients and 0.025 times the recommended clinical dose in heart transplant patients when corrected for BSA. While these animal doses were lower than those given to patients, they were maximal in those species and were considered adequate to evaluate the potential for human risk [see *Warnings and Precautions (5.2)*].

The genotoxic potential of MMF was determined in five assays. MMF was genotoxic in the mouse lymphoma/thymidine kinase assay and the *in vivo* mouse micronucleus assay. MMF was not genotoxic in the bacterial mutation assay, the yeast mitotic gene conversion assay or the Chinese hamster ovary cell chromosomal aberration assay.

MMF had no effect on fertility of male rats at oral doses up to 20 mg/kg/day. This dose represents 0.05 times the recommended clinical dose in renal transplant patients and 0.03 times the recommended clinical dose in cardiac transplant patients when corrected for BSA. In a female fertility and reproduction study conducted in rats, oral doses of 4.5 mg/kg/day caused malformations (principally of the head and eyes) in the first generation offspring in the absence of maternal toxicity. This dose was 0.01 times the recommended clinical dose in renal transplant patients and 0.005 times the recommended clinical dose in cardiac transplant patients when corrected for BSA. No effects on fertility or reproductive parameters were evident in the dams or in the subsequent generation.

14 CLINICAL STUDIES

14.1 Kidney Transplantation

Adults

The three *de novo* kidney transplantation studies compared two dose levels of oral mycophenolate mofetil (1 g twice daily and 1.5 g twice daily) with azathioprine (2 studies) or placebo (1 study) to prevent acute rejection episodes. One of the two studies with azathioprine (AZA) control arm also included anti-thymocyte globulin (ATGAM®) induction therapy. The geographic location of the investigational sites of these studies are included in **Table 9**.

In all three *de novo* kidney transplantation studies, the primary efficacy endpoint was the proportion of patients in each treatment group who experienced treatment failure within the first 6 months after transplantation.

Treatment failure was defined as biopsy-proven acute rejection on treatment or the occurrence of death, graft loss or early termination from the study for any reason without prior biopsy-proven rejection.

Mycophenolate mofetil, in combination with corticosteroids and cyclosporine, reduced (statistically significant at 0.05 level) the incidence of treatment failure within the first 6 months following transplantation (**Table 9**). Patients who prematurely discontinued treatment were followed for the occurrence of death or graft loss, and the cumulative incidence of graft loss and patient death combined are summarized in **Table 10**. Patients who prematurely discontinued treatment were not followed for the occurrence of acute rejection after termination.

Table 9 Treatment Failure in De Novo Kidney Transplantation Studies

USA Study (N=499 patients)	MYCOPHENOLATE MOFETIL 2 g/day (n=167 patients)	MYCOPHENOLATE MOFETIL 3 g/day (n=166 patients)	AZA 1 to 2 mg/kg/day (n=166 patients)
	All 3 groups received anti-thymocyte globulin induction, cyclosporine and corticosteroids		
All treatment failures	31.1%	31.3%	47.6%
Early termination without prior acute rejection	9.6%	12.7%	6.0%
Biopsy-proven rejection episode on treatment	19.8%	17.5%	38.0%
Europe/Canada/ Australia Study (N=503 patients)	MYCOPHENOLATE MOFETIL 2 g/day (n=173 patients)	MYCOPHENOLATE MOFETIL 3 g/day (n=164 patients)	AZA 100 to 150 mg/day (n=166 patients)
	No induction treatment administered; all 3 groups received cyclosporine and corticosteroids.		
All treatment failures	38.2%	34.8%	50.0%
Early termination without prior acute rejection	13.9%	15.2%	10.2%
Biopsy-proven rejection episode on treatment	19.7%	15.9%	35.5%
Europe Study (N=491 patients)	MYCOPHENOLATE MOFETIL 2 g/day (n=165 patients)	MYCOPHENOLATE MOFETIL 3 g/day (n=160 patients)	Placebo (n=166 patients)
	No induction treatment administered; all 3 groups received cyclosporine and corticosteroids.		
All treatment failures	30.3%	38.8%	56.0%
Early termination without prior acute rejection	11.5%	22.5%	7.2%
Biopsy-proven rejection episode on treatment	17.0%	13.8%	46.4%

*Does not include death and graft loss as reason for early termination.

No advantage of mycophenolate mofetil at 12 months with respect to graft loss or patient death (combined) was established (**Table 10**). Numerically, patients receiving mycophenolate mofetil 2 g/day and 3 g/day experienced a better outcome than controls in all three studies; patients receiving mycophenolate mofetil 2 g/day experienced a better outcome than mycophenolate mofetil 3 g/day in two of the three studies. Patients in all treatment groups who terminated treatment early were found to have a poor outcome with respect to graft loss or patient death at 1 year.

Table 10 De Novo Kidney Transplantation Studies Cumulative Incidence of Combined Graft Loss or Patient Death at 12 Months

Study	MYCOPHENOLATE MOFETIL 2 g/day	MYCOPHENOLATE MOFETIL 3 g/day	Control (AZA or Placebo)
USA	8.5%	11.5%	12.2%
Europe/Canada/Australia	11.7%	11.0%	13.6%
Europe	8.5%	10.0%	11.5%

One open-label, safety and pharmacokinetic study of mycophenolate mofetil oral suspension 600 mg/m² twice daily (up to 1 g twice daily) in combination with cyclosporine and corticosteroids was performed at centers in the United States (9), Europe (5) and Australia (1) in 100 pediatric patients (3 months to 18 years of age) for the prevention of renal allograft rejection. Mycophenolate mofetil was well tolerated in pediatric patients [see *Adverse Reactions (6.1)*]. The rate of biopsy-proven rejection was similar across the age groups (3 months to <6 years, 6 years to <12 years, 12 years to 18 years). The overall biopsy-proven rejection rate at 6 months was comparable to adults. The combined incidence of graft loss (5%) and patient death (2%) at 12 months post-transplant was similar to that observed in adult kidney transplant patients.

14.2 Heart Transplantation

A double-blind, randomized, comparative, parallel-group, multicenter study in primary *de novo* heart transplant recipients was performed at centers in the United States (20), in Canada (1), in Europe (5) and in Australia (2). The total number of patients enrolled (ITT population) was 650; 72 never received study drug and 578 received study drug (Safety Population). Patients received mycophenolate mofetil 1.5 g twice daily (n=289) or AZA 1.5 to 3 mg/kg/day (n=289), in combination with cyclosporine (Sandimmune[®] or Neoral[®]) and corticosteroids as maintenance immunosuppressive therapy. The two primary efficacy endpoints were: (1) the proportion of patients who, after transplantation, had at least one endomyocardial biopsy-proven rejection with hemodynamic compromise, or were re-transplanted or died, within the first 6 months, and (2) the proportion of patients who died or were re-transplanted during the first 12 months following transplantation. Patients who prematurely discontinued treatment were followed for the occurrence of allograft rejection for up to 6 months and for the occurrence of death for 1 year.

The analyses of the endpoints showed:

- Rejection: No difference was established between mycophenolate mofetil and AZA with respect to biopsy-proven rejection with hemodynamic compromise.
- Survival: Mycophenolate mofetil was shown to be at least as effective as AZA in preventing death or re-transplantation at 1 year (see **Table 11**).

Table 11 De Novo Heart Transplantation Study Rejection at 6 Months/Death or Re-transplantation at 1 Year

	All Patients (ITT)		Treated Patients	
	AZA N = 323	MYCOPHENOLATE MOFETIL N = 327	AZA N = 289	MYCOPHENOLATE MOFETIL N = 289
Biopsy-proven rejection with hemodynamic compromise at 6 months ^a	121 (38%)	120 (37%)	100 (35%)	92 (32%)
Death or re-transplantation at 1 year	49 (15.2%)	42 (12.8%)	33 (11.4%)	18 (6.2%)

^aHemodynamic compromise occurred if any of the following criteria were met: pulmonary capillary wedge pressure ≥ 20 mm or a 25% increase; cardiac index < 2.0 L/min/m² or a 25% decrease; ejection fraction $\leq 30\%$; pulmonary artery oxygen saturation $\leq 60\%$ or a 25% decrease; presence of new S₃ gallop; fractional shortening was $\leq 20\%$ or a 25% decrease; inotropic support required to manage the clinical condition.

14.3 Liver Transplantation

A double-blind, randomized, comparative, parallel-group, multicenter study in primary hepatic transplant recipients was performed at centers in the United States (16), in Canada (2), in Europe (4) and in Australia (1). The total number of patients enrolled was 565. Per protocol, patients received mycophenolate mofetil 1.5 g twice daily orally or AZA 1 to 2 mg/kg/day orally, in combination with cyclosporine (Neoral[®]) and corticosteroids as maintenance immunosuppressive therapy. The actual median oral dose of AZA on study was 1.5 mg/kg/day (range of 0.3 to 3.8 mg/kg/day) initially and 1.26 mg/kg/day (range of 0.3 to 3.8 mg/kg/day) at 12 months. The

two primary endpoints were: (1) the proportion of patients who experienced, in the first 6 months post-transplantation, one or more episodes of biopsy-proven and treated rejection or death or re-transplantation, and (2) the proportion of patients who experienced graft loss (death or re-transplantation) during the first 12 months post-transplantation. Patients who prematurely discontinued treatment were followed for the occurrence of allograft rejection and for the occurrence of graft loss (death or re-transplantation) for 1 year.

In combination with corticosteroids and cyclosporine, mycophenolate mofetil demonstrated a lower rate of acute rejection at 6 months and a similar rate of death or re-transplantation at 1 year compared to AZA (**Table 12**).

Table 12 De Novo Liver Transplantation Study Rejection at 6 Months/Death or Retransplantation at 1 Year

	AZA N = 287	MYCOPHENOLATE MOFETIL N = 278
Biopsy-proven, treated rejection at 6 months (includes death or re-transplantation)	137 (47.7%)	107 (38.5%)
Death or re-transplantation at 1 year	42 (14.6%)	41 (14.7%)

15 REFERENCES

1. “OSHA Hazardous Drugs.” OSHA. <http://www.osha.gov/SLTC/hazardousdrugs/index.html>

16 HOW SUPPLIED/STORAGE AND HANDLING

Handling and Disposal

Mycophenolate mofetil has demonstrated teratogenic effects in humans [*see Warnings and Precautions (5.1) and Use in Specific Populations (8.1)*]. Wearing disposable gloves is recommended when wiping the outer surface of the bottle and or bottle cap. Avoid direct contact of MYHIBBIN with skin or mucous membranes [*see Dosage and Administration (2.6)*]. Follow applicable special handling and disposal procedures¹. Do not use after 60 days of first opening the bottle.

MYHIBBIN is supplied as a white to off-white oral suspension of mycophenolate mofetil 200 mg/mL and it is supplied with a child resistant cap:

- 175 mL of suspension in 225 mL bottle..... NDC 24338-018-01

Storage and Stability

- Store at 20°C to 25°C (68°F to 77°F); excursions permitted to 15°C to 30°C (59°F to 86°F) [See USP Controlled Room Temperature].
- Do not freeze.

17 PATIENT COUNSELING INFORMATION

Advise the patient to read the FDA-approved patient labeling (Medication Guide).

17.1 Embryofetal Toxicity

Pregnancy loss and malformation

- Inform females of reproductive potential and pregnant women that use of MYHIBBIN during pregnancy is

associated with an increased risk of first trimester pregnancy loss and an increased risk of congenital malformations. Advise that they must use an acceptable form of contraception [see *Warnings and Precautions (5.1), Use in Specific Populations (8.1, 8.3)*].

- Encourage pregnant women to enroll in the Pregnancy Exposure Registry. This registry monitors pregnancy outcomes in women exposed to mycophenolate [see *Use in Specific Populations (8.1)*].

Contraception

- Discuss pregnancy testing, pregnancy prevention and planning with females of reproductive potential [see *Use in Specific Populations (8.3)*].
- Females of reproductive potential must use an acceptable form of birth control during the entire MYHIBBIN therapy and for 6 weeks after stopping MYHIBBIN, unless the patient chooses abstinence. MYHIBBIN may reduce effectiveness of oral contraceptives. Use of additional barrier contraceptive methods is recommended [see *Use in Specific Populations (8.3)*].
- For patients who are considering pregnancy, discuss appropriate alternative immunosuppressants with less potential for embryofetal toxicity. Risks and benefits of MYHIBBIN should be discussed with the patient.
- Advise sexually active male patients and/or their partners to use effective contraception during the treatment of the male patient and for at least 90 days after cessation of treatment. This recommendation is based on findings of animal studies [see *Use in Specific Populations (8.3), Nonclinical Toxicology (13.1)*].

17.2 Development of Lymphoma and Other Malignancies

- Inform patients that they are at increased risk of developing lymphomas and other malignancies, particularly of the skin, due to immunosuppression [see *Warnings and Precautions (5.2)*].
- Advise patients to limit exposure to sunlight and ultraviolet (UV) light by wearing protective clothing and use of broad-spectrum sunscreen with high protection factor.

17.3 Increased Risk of Serious Infections

Inform patients that they are at increased risk of developing a variety of infections due to immunosuppression. Instruct them to contact their physician if they develop any of the signs and symptoms of infection explained in the Medication Guide [see *Warnings and Precautions (5.3)*].

17.4 Blood Dyscrasias

Inform patients that they are at increased risk for developing blood adverse effects such as anemia or low white blood cells. Advise patients to immediately contact their healthcare provider if they experience any evidence of infection, unexpected bruising, or bleeding, or any other manifestation of bone marrow suppression [see *Warnings and Precautions (5.4)*].

17.5 Gastrointestinal Tract Complications

Inform patients that MYHIBBIN can cause gastrointestinal tract complications including bleeding, intestinal perforations, and gastric or duodenal ulcers. Advise the patient to contact their healthcare provider if they have symptoms of gastrointestinal bleeding, or sudden onset or persistent abdominal pain [see *Warnings and Precautions (5.5)*].

17.6 Acute Inflammatory Syndrome

Inform patients that acute inflammatory reactions have been reported in some patients who received mycophenolate mofetil. Some reactions were severe, requiring hospitalization. Advise patients to contact their physician if they develop fever, joint stiffness, joint pain or muscle pains [see *Warnings and Precautions (5.7)*].

17.7 Immunizations

Inform patients that MYHIBBIN can interfere with the usual response to immunizations. Before seeking vaccines on their own, advise patients to discuss first with their physician [*see Warnings and Precautions (5.8)*].

17.8 Administration Instructions

- Advise patients to avoid contact of the skin or mucous membranes with MYHIBBIN. If such contact occurs, they must wash the area of contact thoroughly with soap and water. In case of ocular contact, rinse eyes with plain water.
- Advise patients to take a missed dose as soon as they remember, except if it is closer than 2 hours to the next scheduled dose; in this case they should continue to take MYHIBBIN at the usual times.

17.9 Blood Donation

Advise patients not to donate blood during therapy and for at least 6 weeks following discontinuation of MYHIBBIN [*see Warnings and Precautions (5.9)*].

17.10 Semen Donation

Advise males of childbearing potential not to donate semen during therapy and for 90 days following discontinuation of MYHIBBIN [*see Warnings and Precautions (5.10)*].

17.11 Potential to Impair Driving and Use of Machinery

Advise patients that MYHIBBIN can affect the ability to drive or operate machines. Patients should avoid driving or operating machines if they experience somnolence, confusion, dizziness, tremor or hypotension during treatment with MYHIBBIN [*see Warnings and Precautions (5.12)*].

Distributed by:

Azurity Pharmaceuticals, Inc.
Woburn, MA 01801 USA

MYH-PI-01 Rev. 05/2024